

OLD MARSH GOLF CLUB
PB 58, PG 62

MIRASOL PLAT SIX

PART OF GOLF DIGEST P.C.D.
BEING IN SECTION 33, TOWNSHIP 41 SOUTH, RANGE 42 EAST,
AND SECTIONS 03 AND 04, TOWNSHIP 42 SOUTH, RANGE 42 EAST,
CITY OF PALM BEACH GARDENS, PALM BEACH COUNTY, FLORIDA
SHEET 19 OF 21

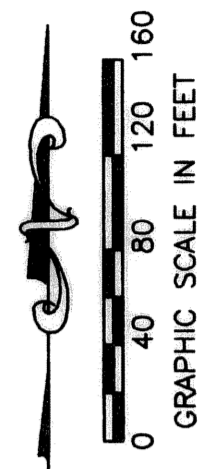
107

STATE OF FLORIDA
COUNTY OF PALM BEACH

THIS PLAT WAS FILED FOR
RECORD _____ DAY OF _____
AD, 2005 AND DULY RECORDED
IN PLAT BOOK _____ ON PAGES
_____ THROUGH _____

SHARON R. BOCK, CLERK
BY: _____, D.C.

CIRCUIT COURT SEAL



LEGEND

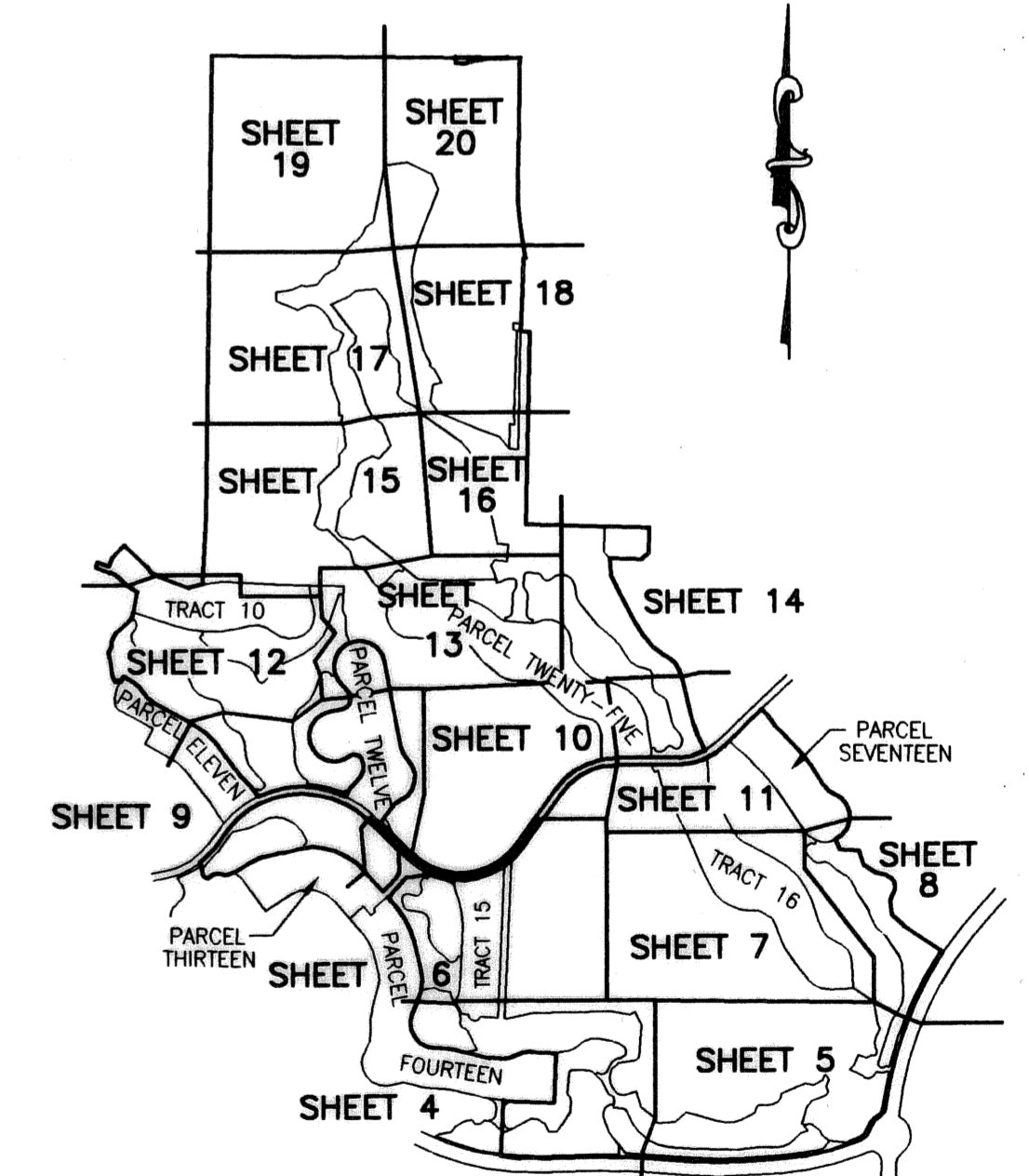
- AE ACCESS EASEMENT
- Δ CENTRAL (DELTA) ANGLE
- CBE CART BRIDGE EASEMENT
- CH CHORD
- DE DRAINAGE EASEMENT
- ESMT EASEMENT
- IEE INGRESS/EGRESS EASEMENT
- FPL FLORIDA POWER AND LIGHT
- L ARC LENGTH
- LE LANDSCAPE EASEMENT
- MMMA MIRASOL MASTER MAINTENANCE ASSOCIATION
- NPBCID NORTHERN PALM BEACH COUNTY IMPROVEMENT DISTRICT
- ORB OFFICIAL RECORD BOOK
- PBCO PALM BEACH COUNTY
- PPAE PUBLIC PEDESTRIAN ACCESS EASEMENT
- PAE PEDESTRIAN ACCESS EASEMENT
- PB PLAT BOOK
- PCD PLANNED COMMUNITY DEVELOPMENT PAGE(S)
- PME PRESERVE MAINTENANCE EASEMENT
- R RADIUS
- SLE SEWER LINE EASEMENT
- SUA SEACOAST UTILITY AUTHORITY
- UE UTILITY EASEMENT
- WLE WATER LINE EASEMENT
- WMAE WATER MANAGEMENT ACCESS EASEMENT
- WME WATER MANAGEMENT EASEMENT
- WMAE WATER MANAGEMENT MAINTENANCE EASEMENT
- CENTERLINE
- PERMANENT REFERENCE MONUMENT SET LB-048 (4"x4" CONCRETE)
- PERMANENT REFERENCE MONUMENT FOUND LB-048 (4"x4" CONCRETE)
- UNLESS OTHERWISE NOTED WITNESS MONUMENT SET LB-048 (4"x4" CONCRETE)

MATCH LINE - SEE SHEET 20

MIRASOL PLAT FIVE
PB 98, PGS 73-91
TRACT P-A
CONSERVATION ESMT
ORB 13107, PG 1175
PART OF PRESERVE A

TRACT P-A
CONSERVATION ESMT
ORB 13107, PG 1175
ORB 14243, PG 768
PARTIAL RELEASE PER
ORB 14243, PG 807
PART OF PRESERVE A
ALSO A PME IN
FAVOR OF NPBCID
SECOND AMENDMENT
ORB 17915, PG 1934

TRACT GC-4
ALSO A WMAE IN
FAVOR OF NPBCID



SHEET LOCATION MAP
NOT TO SCALE

THIS INSTRUMENT WAS PREPARED BY MARY HANNA CLODFELTER, P.S.M. IN
THE OFFICES OF MOCK, ROOS & ASSOCIATES, INC., 5720 CORPORATE WAY,
WEST PALM BEACH, FLORIDA 33407.

SCALE:	1" = 80'
P.A. NO.:	99374.00
DATE:	MAY 2003
DRAWING NO.:	41-42-33-31

FLORIDA L.B. NO. 48

MOCK • ROOS
ENGINEERS • SURVEYORS • PLANNERS

5720 Corporate Way, West Palm Beach, Florida 33407
(561) 683-3113, fax 478-7248

MIRASOL PLAT SIX
PART OF GOLF DIGEST P.C.D.
BEING IN SECTION 33,
TOWNSHIP 41 SOUTH, RANGE 42 EAST,
AND IN SECTIONS 03 AND 04,
TOWNSHIP 42 SOUTH, RANGE 42 EAST,
CITY OF PALM BEACH GARDENS,
PALM BEACH COUNTY, FLORIDA

SHEET 19 OF 21

S:\top\lay\pbc6\cadd\pbc6r02.dwg 1/31/2005 12:22:16 PM EST

REV.: 01-31-05
CAD FILE:
TAYLGP6\GCP6RPO2

MATCH LINE - SEE SHEET 17

N00°56'05"E 3806.11'
1400.00'

1400.00'

TIE LINE ONLY
N42°36'26"W 784.95'

S89°22'41"E 2546.42'

1300.06' TO P.R.M.

712.32'

FOUND PERMANENT
REFERENCE MONUMENT
"LB 959"

FOUND PERMANENT
REFERENCE MONUMENT
"LB 959"

N38°21'55"E
50.39'

N61°0'0"E
70.06'

N41°50'14"E
72.48'

N63°09'17"E
146.88'

MIRASOL
N16°24'18"E
288.57'

N08°39'34"E
181.66'